

Have a Fire-Safety Holiday Season

These Seasonal Fire Safety Tips come from your Local Fire Department

Christmas Trees

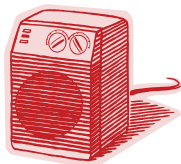
- Select a dark green, fresh-cut tree with a strong evergreen smell.



- Make sure the base of the tree is immersed in water at all times—check the reservoir frequently.
- Use only CSA approved lighting strings—throw damaged light strings away.
- If the tree starts to turn brown—remove it immediately.
- Don't leave the tree up too long—safely dispose of trees right after the holiday.

Space Heaters

- Place all space heaters at least 1 meter (3 feet) away from anything that can burn - wallpaper, bedding and clothing.
- Turn off/unplug space heaters when you leave the room or go to sleep.



- Don't leave children/pets unattended with space heaters.
- Check electric space heaters for frayed cords or overheating.
- Use only the recommended fuel for liquid fuelled heaters. Never use gasoline. Always turn off the heater and let it cool before refueling.
- An un-vented fuel-fired heater can produce deadly amounts of carbon monoxide. Ensure combustion gases are vented outdoors.

Fireplace Safety

- Burn small amounts of wood at frequent intervals.
- Don't burn paper, wrapping paper or pine boughs. This can cause sparks to drift out of your chimney and ignite your roof.



- Have your chimney checked and cleaned by a professional each winter.
- Use a screen in front of the fireplace to keep sparks in.
- Never use gasoline or other flammable liquids to light a fire. The vapours will explode.

- Dispose of ashes in a metal container, stored outside away from combustibles.

Using Candles

- Never use lit candles to decorate a Christmas tree.



- Keep lit candles away from paper decorations and other flammable materials.
- Do not leave candles within reach of children or pets.
- Put candles in non-tip candleholders and place them on a firm surface where they won't be knocked over.
- Snuff candles out when the festivities are over. Never let the candles burn down to the bottom.

Supervise Children

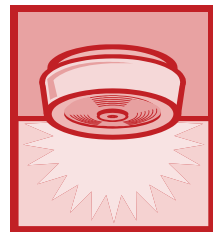
- Fascination and curiosity about fire can lead a child to play with matches, lighters or flames within easy reach.



- This holiday season protect your children from fire:
- Keep matches and lighters out of sight and reach of children.
- Supervise children at all times when they are in a room with a fireplace, a Christmas tree, lit candles, space heater or other open flame or hot surfaces.

Test your Smoke Alarms

- Test your smoke alarms monthly.
- Never remove the batteries from your smoke alarms for another purpose.
- Clean your smoke alarms by



vacuuming the cover.

- Smoke alarms don't last forever. Replace detectors that are more than 10 years old.

Plan Your Escape

- Plan and practice a fire escape with your family. Plan two ways out of every room.
- Have a family meeting place outside.

**In Case of Fire:
Get Out & Stay Out**

**Keep This 911 Information Sheet
Close to the Phone**
(Hint: Leave this out for the Babysitter)

**Then Call 911
From a Safe Location**

Our Home Address is:

Our Home Phone # is:

Directions to our Home: